

Micro Etching Non Slip Safe Solution

WHAT IS THE SAFE SOLUTION®?

- Firstly, it *isn't* a non skid paint nor is it an anti slip coating!
- The SAFE SOLUTION® anti-slip treatment system is however, non-toxic and when combined with the Neutralizer Solution, it becomes biodegradable

HOW DOES IT WORK?

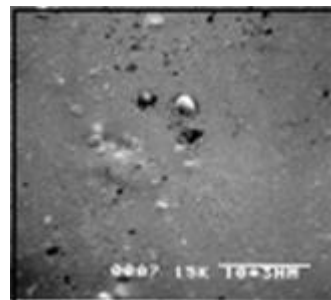
When water or grease puddle on non-porous hard mineral surfaces, you are actually hydroplaning on the film of water or contaminants. It is similar to a bald car tyre on a wet road surface which would be very slippery and provide little or no traction whatsoever.

Surface before using SAFE SOLUTION®

Surface of a typical procelain tile before Safe Solutions treatment

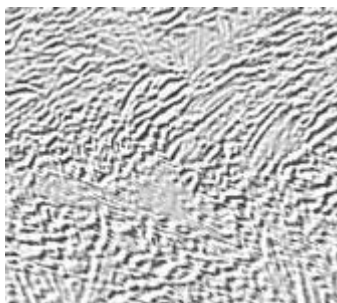


Surface of a typical glazed ceramic tile before Safe Solutions treatment

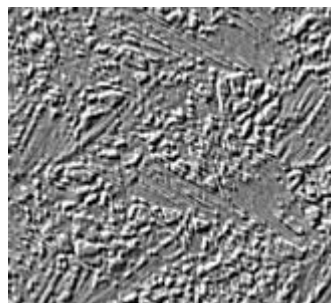


Surface after using SAFE SOLUTION®

Surface of a typical procelain tile after Safe Solutions treatment



Surface of a typical glazed ceramic tile after Safe Solutions treatment



After THE SAFE SOLUTION® anti slip treatment system is applied, microscopic channels are created for the water and oils to be disbursed from under foot, allowing you to make contact with the floor surface at all times. To the naked eye and touch, the surface is virtually unchanged when dry. ***Please note***, this process is a permanent solution to change a slippery surface to an non slip and can not be "undone".

Global Safe New Zealand Phone +64 6 377 7555 Fax +64 6 377 7575

E-mail: info@globalsafe.co.nz Web: www.globalsafe.co.nz

We also have representatives in USA, Canada, Australia, the Pacific Islands and the Philippines

THE SAFE SOLUTION® DRAMATICALLY INCREASES TRACTION TO EXISTING SURFACES.
COEFFICIENT OF FRICTION (COF) AND SLIP RESISTANCE

AS/NZS 4663:2004 Slip resistance measurements of existing pedestrian surfaces (in-situ testing) definitions;

Coefficient of Friction is the ratio of the tangential force required to move a body across a horizontal surface to the vertical load imposed on the surface by the body.

Friction is an intrinsic property of the two interfacing, interacting surfaces resulting from their micro- and macro-roughness, inter- and intra-molecular forces of attraction and repulsion, and their visco-elastic properties.

Slip Resistance is the frictional force opposing movement of an object across a surface, usually with reference to the sole or heel of a shoe on a floor.

The product has been independently tested by accredited testing agencies and on glossy tiles has achieved up to 350% improvement in slip resistance.

INTERPRETATION OF THE WET PENDULUM RESULTS (from Table 1, AS/NZS 4663:2004)			
Class	Pendulum (see Note 1) mean BPN Four S rubber	TRRL rubber	Contribution of the floor surface to the risk of slipping when wet
V	>54	>44	Very low
W	45-54	40-44	Low
X	35-44	-	Moderate
Y	25-34	-	High
Z	<25	-	Very high

NOTES:
 1: While either of these test methods may be used, the test report shall specify which slider was used.
 2: It is expected that these wet surfaces will be more slip resistant when dry.

- Dramatically Increases Traction / Most Cases Exceeds Relevant Standard Requirements
- Can lower Insurance Rates* / Discounts on Public Liability Insurance*
- Reduce LOST Man-hours and Key Staff Turnover*/ Increased Productivity*
- Recommended by Fall Prevention Experts; SLIPSTOPPERS

* When combined with our Floor safety Programmeme and using our Maintenance Solution™ Cleaner.

If you have any issue or doubt about your floor surface slipperiness, contact your local Authorised Dealer. Our Floor Safety Expert will come to you to asses your situation and will provide you with a complimentary Floor Safety Inspection Report, so you will know whether you have an issue. This is only just the beginning of our service and at all times you can be sure that our representative will have your best interest at heart.

Click on [Contact us](#) and our nearest Authorised Dealer will contact you.

For further information regarding to the FSP© contact us on +64 (0) 6 377 7555 or click on www.globalsafe.co.nz

Global Safe New Zealand Phone +64 6 377 7555 Fax +64 6 377 7575

E-mail: info@globalsafe.co.nz Web: www.globalsafe.co.nz

We also have representatives in USA, Canada, Australia, the Pacific Islands and the Philippines